



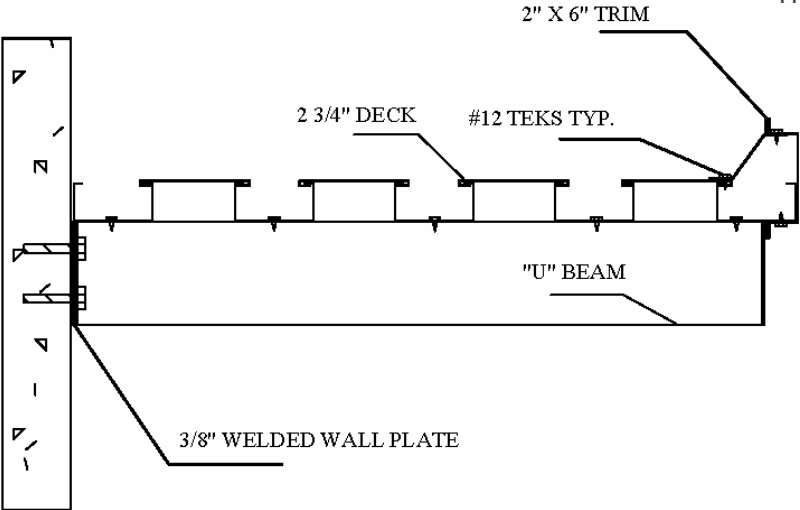
Overhead Supported Canopy System

etc
east texas canopy, inc.

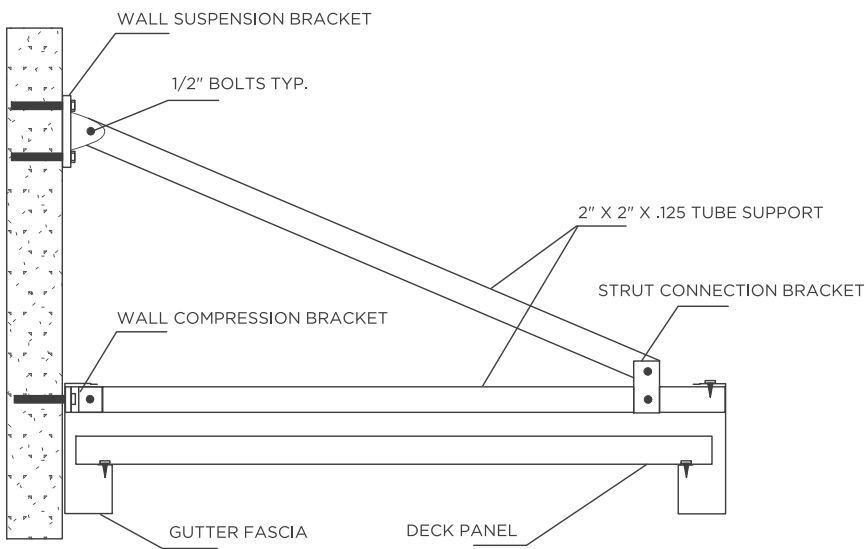
With **25** years of experience

Founded in 1985, we are a full service manufacturer that offers engineering and design consulting as well as being a single source supplier. Whatever your needs East Texas Canopy can deliver.

Beam Supported

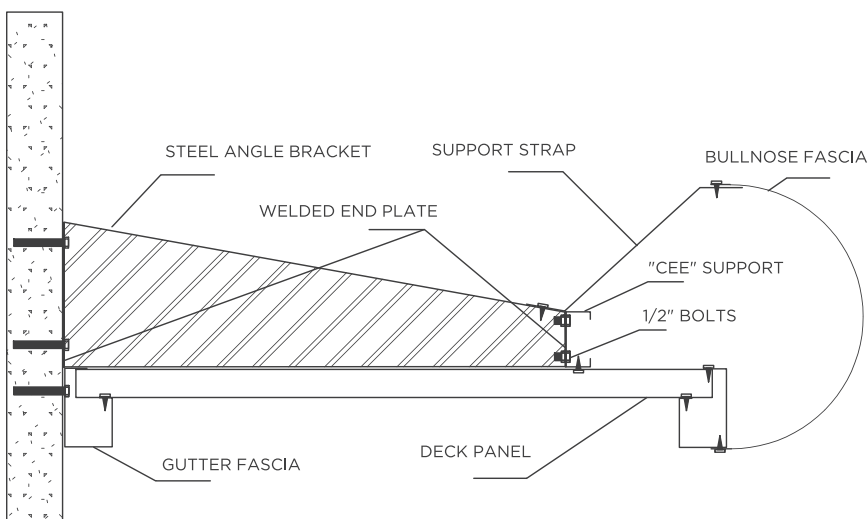


Tube Supported



FOR SITE SPECIFIC
ENGINEERING BASED
ON SITE SPECIFIC CONDITIONS,
PLEASE CONTACT OUR OFFICE
OR VISIT.

Angle Bracket Supported



PART 1: GENERAL

1.1 BRIEF DESCRIPTION

Provide a complete pre-engineered canopy system, including labor, with all related work.

1.2 SUBMITTALS

A. Product Data:

1. Manufacturer's specifications and technical data.
2. Manufacturer's installation instructions.

B. Shop Drawings:

1. Provide signed sealed engineered shop drawings bearing the seal of a registered engineer in the state of Texas.
2. Indicate size, material, and finish. Show location and installation procedures. Include details of joints, attachments and clearances.

C. Samples or color charts showing manufacturer's full range of colors, standard and custom for Architects selection.

PART 2: PRODUCTS

2.1 MANUFACTURERS

A. EAST TEXAS CANOPY, Inc. 11221 CR 2130, Whitehouse, Texas 75791. (800)-816-3822, www.easttexascanopy.com.

B. Other Manufacturers must have a minimum of five (5) years experience manufacturing products meeting or exceeding the specifications and comply with Division 1 regarding substitutions to be considered.

C. Specifications based on East Texas Canopy System by East Texas Canopy Systems.

ARCHITECT TO SELECT FROM ONE OF THE CANOPY SYSTEMS BELOW:

2.2 OVERHEAD SUPPORTED GUTTER PERIMETER CANOPIES

A. PANEL:

1. East Texas Canopy "FD" Panel 12"/16" wide X 3" tall.
2. MATERIAL: 24 GA smooth or embossed steel.
3. FINISH: Factory Applied Kynar (Color to be selected, submit samples)

B. PANEL (EXTRUDED)

1. MATERIAL: 2 3/4" X 6" X .078 Extruded Aluminum interlocking, self flashing sections.
2. FINISH: Standard 204R1 Satin Etched Anodized.

C. GUTTER & FASCIA:

1. GUTTER: East Texas Canopy Sculptured or Box Gutter
2. MATERIAL: 24 GA smooth or embossed steel.
3. FINISH: Factory Applied Kynar (Color to be selected, submit samples)
4. DRAINAGE: Water shall drain from covered surfaces into integral gutter.

D. GUTTER & FASCIA (EXTRUDED):

1. GUTTER: East Texas Canopy Extruded Gutter, Size as Shown on Drawings
2. MATERIAL: 0.125" Thick Extruded Aluminum Sections.
3. FINISH: Standard 204R1 Satin Etched Anodized.
4. DRAINAGE: Water shall drain from covered surfaces into integral gutter.

E. OVERHEAD SUPPORTS: Supply Overhead Support tubes and brackets of adequate size and thickness to support imposed loads, verify with Engineer of record.

F. FASTNERS:

1. DECK SCREWS: # 12 Structural Tek's with Neoprene or EPDM washers unless otherwise noted.
2. NUTS, BOLTS, WASHERS: Stainless steel in sizes to suit application.

2.3 OVERHEAD SUPPORTED BEAM MOUNTED CANOPY

A. BEAMS:

1. 4" X 6" X 0.125 thick Extruded Aluminum "U" or as shown on drawings / sized to suit application.
2. FINISH: Standard 204R1 Satin Etched Anodized.
3. DRAINAGE: Water shall be directed from panels through "U" beam and channeled through scuppers located at the front of the beam.

B. PANELS:

1. MATERIAL: 2 3/4" X 6" X .078 Extruded Aluminum interlocking, self flashing sections.
2. FINISH: Standard 204R1 Satin Etched Anodized.

C. OVERHEAD SUPPORTS: Supply Overhead Support tubes and brackets of adequate size and thickness to support imposed loads, verify with Engineer of record.

D. FASTNERS:

1. DECK SCREWS: # 12 Structural Tek's with Neoprene or EPDM washers unless otherwise noted.
2. NUTS, BOLTS, WASHERS: Stainless steel in sizes to suit application.

2.4 CONCEALED TAPERED BRACE CANOPY

A. BRACES:

1. MATERIAL: 2" X 12 GA. Steel "CEE" Tapered from 12" to 4".
2. BRACING: 2" X 4" X 12 GA. Steel "CEE" Intermediate Supports.
3. FINISH: Cold Rolled Galvanized unless otherwise noted.

B. PANELS:

1. MATERIAL: 2" X 12" X 24 GA. "Quicklock" Panel.
2. FINISH: Factory Applied Kynar (Color to be selected, submit samples)
3. DRAINAGE: Water to be channeled into integral gutter and expelled through scuppers located and the front of the canopy.

C. GUTTER / TRIM:

1. MATERIAL:

- a. GUTTER: East Texas Canopy Sculpted or Box Gutter.
- b. TRIM: 2" X 16" X 24 GA. "Lockseam" Panel with Striations.

2. FINISH: Factory Applied Kynar (Color to be selected, submit samples)

D. FASTENERS

1. DECK SCREWS: # 12 Structural Tek's with Neoprene or EPDM washers unless otherwise noted.
2. NUTS, BOLTS, WASHERS: Stainless Steel in sized to suit application.

2.5 WARRANTY

Manufacturer shall provide standard limited warranty for canopy systems for a period of 1 year from date of installation, no more than 18 months after shipment from manufacturing plant. When notified in writing from the Owner of a manufacturing defect, manufacturer shall promptly correct deficiencies without cost to the Owner.

PART 3: INSTALLATION

3.1 INSTALLATION

A. Canopies shall be installed according to approved plans and shop drawings and the entire structure shall be erected straight, plumb and true in accordance with standard construction procedures. All joints and connections shall be tight and caulked to make the installation complete and watertight. Coordinate installation process with General Contractor.

B. Upon completion the structure shall be cleaned of any grease, dirt or stains and all trash removed from the site.



east texas canopy, inc.

11221 CR 2130
WHITEHOUSE, TX 75791
PH: 1-800-816-3822
FAX: 903-839-2097

EASTTEXASCANOPY.COM